

Motion Control beyond the panel

Learn how to use mechatronic tools to optimise your component selection

| Tobias Kromer



WITTENSTEIN

alpha

Motion Control beyond the panel

Company introduction

WITTENSTEIN alpha GmbH – Development, production and sales of high-precision **servo drive systems for sectors** that require maximum precision



Rockwell Automation – Making the World More Productive & Sustainable

Integrated Control & Information
Making the World More Productive & Sustainable

Rockwell Automation

Integrated Architecture & Software

Intelligent Motor Control

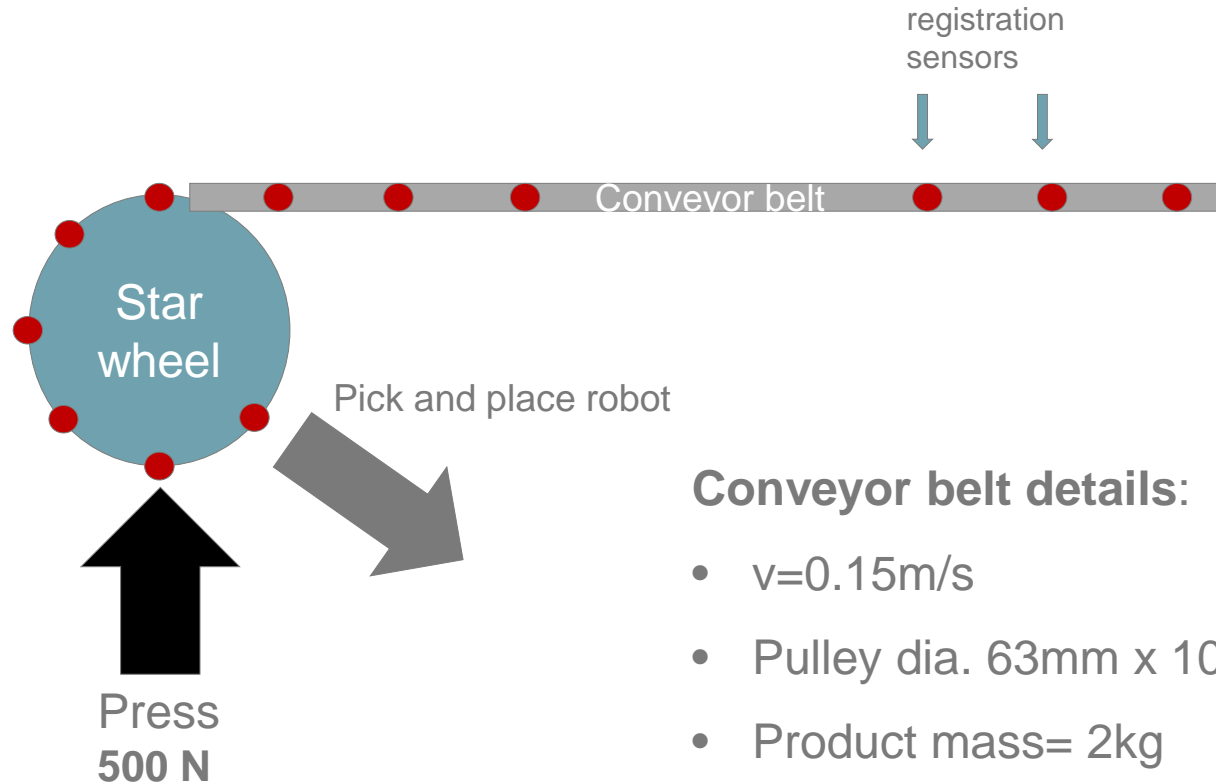
Solutions & Services

Motion Control beyond the panel

Application example – bottle capping station

Indexing table details:

- Dia. 450mm x 50mm (solid steel)
- Friction torque 1Nm (estimated)
- Movement 45 degree
- Movement time 0.5 sec
- Dwell time 0.35 sec
- Pressing force 500N (at radius)



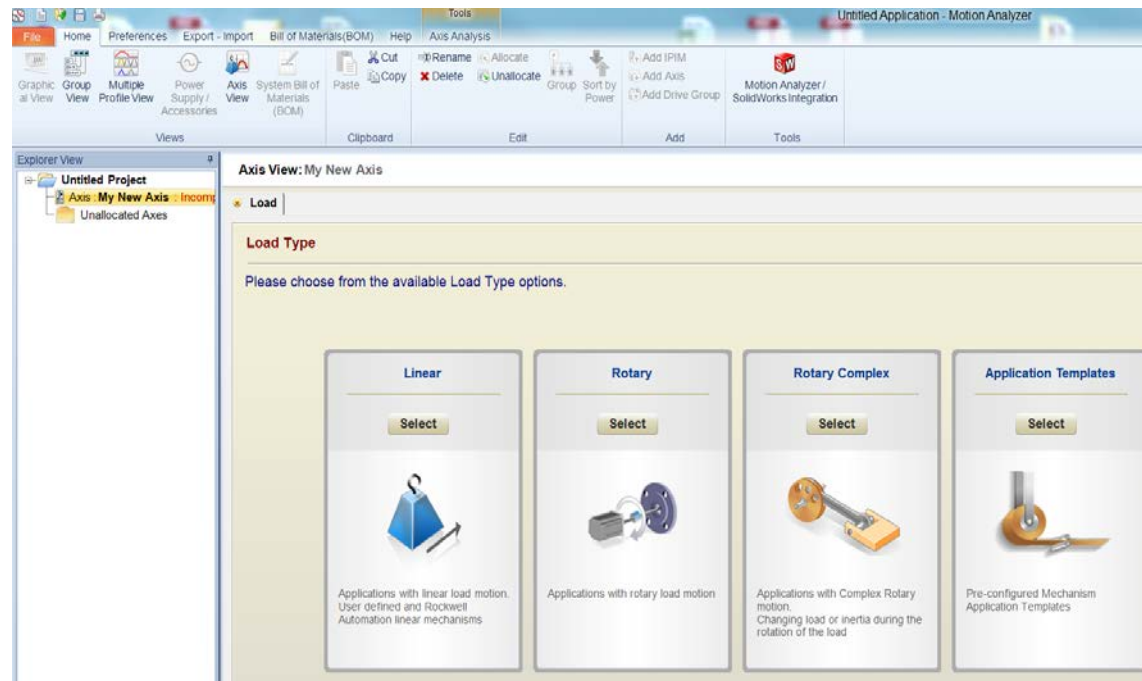
Conveyor belt details:

- $v=0.15\text{m/s}$
- Pulley dia. 63mm x 100mm
- Product mass= 2kg
- Belt mass= 5kg
- Machine acc. Time 5 sec

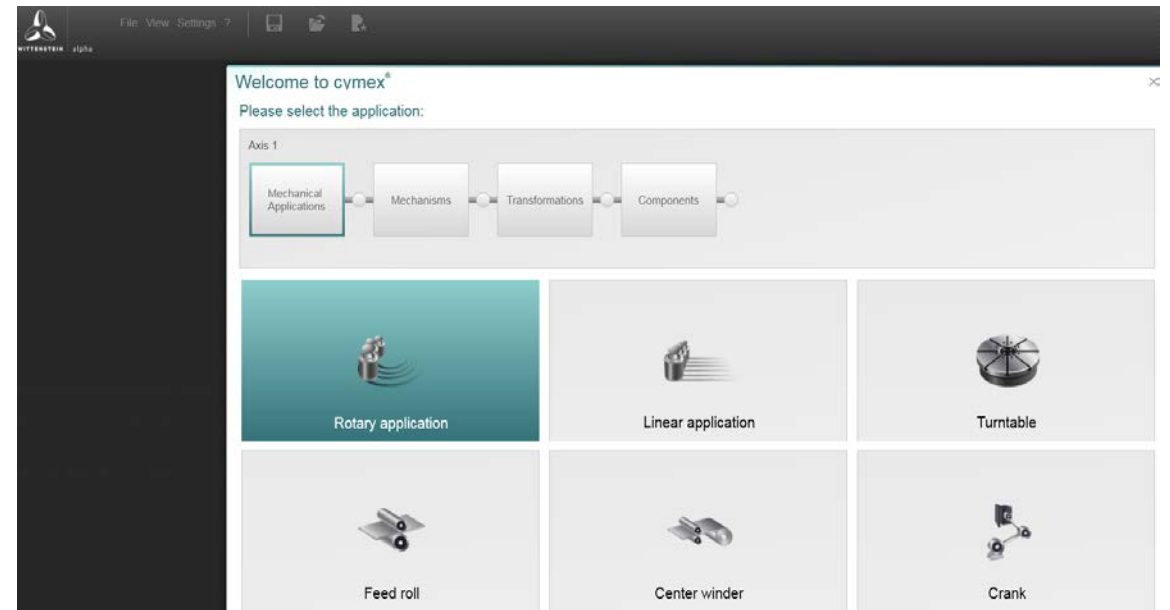
Motion Control beyond the panel

Mechatronic tool overview

Rockwell Motion Analyzer 7.2
main focus – motor & drive selection



WITTENSTEIN cymex 5 software
main focus – mechanical drive chain



Thank you for your attention!